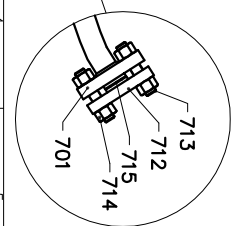
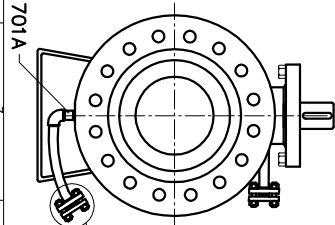
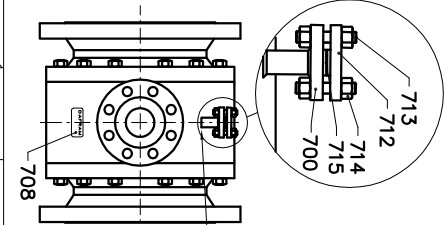


SIZE	24"
DN	600
DE	589
B	1397
Valve weight kg~	4400

THREADED AND SEAL WELDED

THREADED AND SEAL WELDED

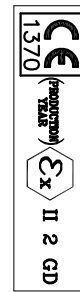


DESIGN TEMP. :  
-10° C to +82° C

DESIGN acc.to  
ASME B16.34 and API6D

PAINTING TO :  
V-9 cycle-1 RAL: White 9010  
Dafraim PRO 7.5H: PAG. 235

DN>=32 , MARKING:



FIRE SAFE VALVES  
ACCORDING TO BS 6755 P.2  
or API 607 5th edition

Pos.	PART NAMES	MATERIALS
721	O-RING	VITON GLT AED
720	EXTENSION	ASTM A350 gr. LF2
715	SPIRAL WOUND GASKET	316 STAINLESS STEEL-EXPANDED GRAPHITE
714	NUTS	ASTM A194 gr. 7
713	BOLTS	ASTM A320 gr. L7
712	BLIND FLANGE	ASTM A350 gr. LF2
708	IDENTIFICATION PLATE	STAINLESS STEEL
706	EYE BOLT	GALVANIZED CARBON STEEL
705	VALVE SUPPORT	CARBON STEEL
703	STEM GREASE FITTING	ASTM A350 gr. LF2
702	SEAT GREASE FITTING	ASTM A350 gr. LF2
701A	NIPPLE 1"NP1	ASTM A350 gr. LF2
701	DRAIN FLANGE	ASTM A350 gr. LF2
700	BLEED FLANGE	ASTM A350 gr. LF2
606	STEM KEY	CARBON STEEL
605	ANTISTATIC DEVICE	316 STAINLESS STEEL
604	UPPER STEM SEAL	EXPANDED GRAPHITE
602	STEM O-RING	VITON GLT AED
601	LOWER STEM SEAL	NYLON
600	STEM	ASTM A29 4140+30µm ENP
505	COIL SPRINGS	INCONEL X-750
504	FIRE-SAFE SEAT SEAL	EXPANDED GRAPHITE
502	SEAT O-RING	VITON GLT AED
501	SEAT	NYLON
500	SEAT RING	ASTM A350 gr. LF2+30µm ENP
404	BALL ANTI-FRICTION BEARING	PTFE
403	BEARING RETAINER PIN	316 STAINLESS STEEL
402	BEARING RETAINER	ASTM A350 gr. LF2
401	BALL BEARING	CARBON STEEL + PTFE
400	BALL	ASTM A350 gr. LF2+30µm ENP
207	ADAPTER FLANGE SCREWS	A2/70
206	ADAPTER FLANGE	ASTM A350 gr. LF2
205	TOP FL. PIN	CARBON STEEL
204	TOP FL. SCREWS	A2/70
203	TOP FL. SECOND. GASKET	EXPANDED GRAPHITE
201	TOP FL. PRIM. GASKET	VITON GLT AED
200	TOP FLANGE	ASTM A350 gr. LF2
106	NUTS	ASTM A194 gr. 7
105	BOLTS	ASTM A320 gr. L7
104	SECONDARY BODY GASKET	EXPANDED GRAPHITE
102	PRIMARY BODY GASKET	VITON GLT AED
101	BODY CONNECTOR	ASTM A350 gr. LF2
100	VALVE BODY	ASTM A350 gr. LF2

Valve type	Size/DN	Class	End Type	Material
F8FP	24"/600	600/PN100	ASME B16.5 RF	LF2/LF2+ENP
Confirmation NR.	Customer		Your order	
Pos.	Accessories:			
REV.	ISSUED BY	CHECKED BY	PASSED BY	DATE
Project Name : _____				
CONFIDENTIAL : Duplicating, copying or disclosure to third party, a part or derived from this drawing must have DAFRAM's written permission.				
Code Date : _____ DW_CONF				
DRAWING AB011614-1/4				

